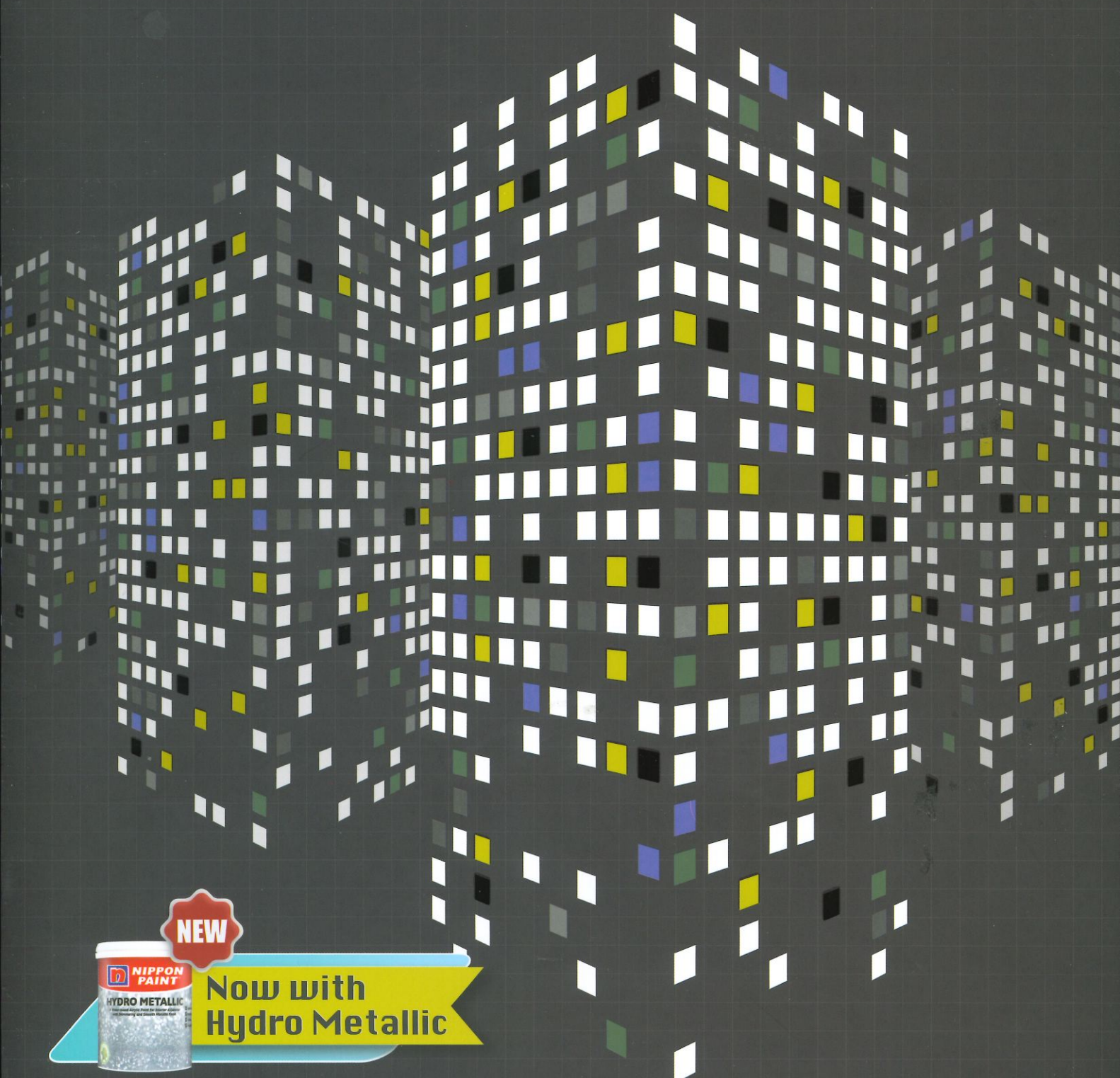




# METALLIC

COLLECTION



**NEW**



Now with  
Hydro Metallic

 **Momento**<sup>®</sup>  
Special Effect Paint

Metal ♦ Wood ♦ Masonry Walls



# NEW Hydro Metallic

Subtle shimmering and lasting smooth metallic finish for the beauty of your gypsum, masonry wall, wood and metal surfaces.



- Low Odour
- Easy application by roller/brush/spray
- Weather Resistance

Colour Creations®

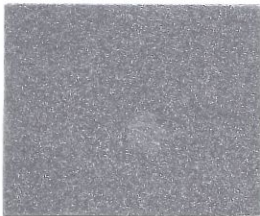
# Metallic Paint

Glossy and lasting smooth metallic finish for the beauty of your masonry wall, wood and metal surfaces.



- Excellent Drying Time
- Easy application by roller/brush/spray
- Weather Resistance

Colour Creations® PRO SERVICES



Warm Silver  
MET 025



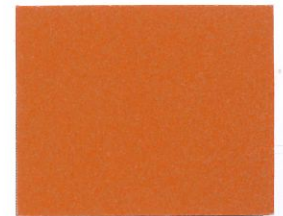
Champagne Bronze  
MET 029



Olive Green  
MET 009



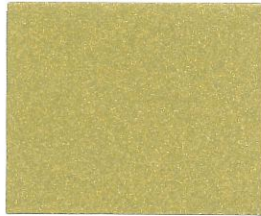
Peony Pink  
MET 004



Sunbaker  
MET 013



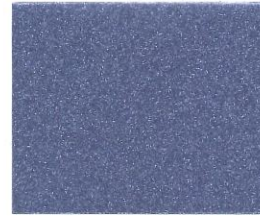
Silvery Dlink  
MET 023



Golden Green  
MET 012



Lime Green  
MET 008



Bloom Glitter  
MET 006



Apricot Love  
MET 001



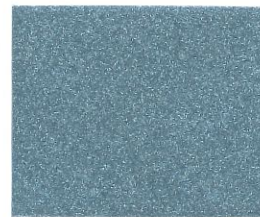
Platinum Shine  
MET 019



Gold Glitter  
MET 028



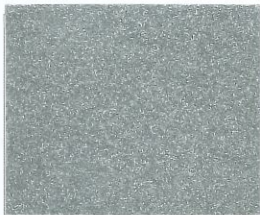
Forest Grip  
MET 010



Aqua Chrome  
MET 024



Copper Red  
MET 007



Iron Ore  
MET 030



Bold Gold  
MET 027



Mistic Green  
MET 011



Cobalt Blue  
MET 014



Red Velvet  
MET 002



Dark Iron  
MET 022



Burnt Amber  
MET 026



Magic Mint  
MET 018



Gypsy Blue  
MET 015



Fuchsia Pink  
MET 003



Ebon Black  
MET 021



Sandy Brown  
MET 020



Moonlight Green  
MET 016



Sparkle Teal  
MET 017



Lavender Shine  
MET 005



# Micaceous Iron Oxide (MIO)

Stunning metallic matte shades for metal surfaces with good protection.

Revitalize steel surfaces with metallic matte finishing that subtly transforms dullness to liveliness almost instantly. Turn steel surfaces to wonders with these lustrous shades that offers excellent protection.



Chemical resistance



Weathering resistance



Good protection for steel

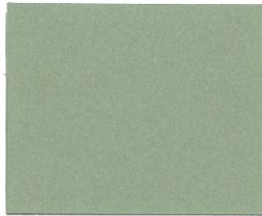
Colour Creations® PRO SERIES



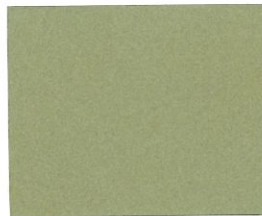
Faded Lilac  
916



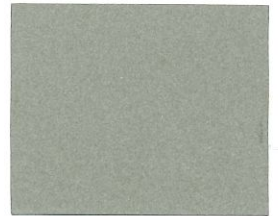
Cave Green  
915



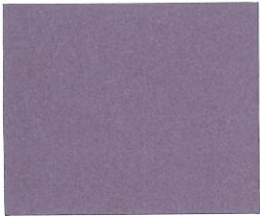
Ayocado  
301



Cotton Grey  
912



Pewter Grey  
908



Sparkle Violet  
919



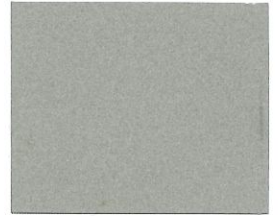
Neptune Blue  
903



Forest Green  
303



Clay  
702



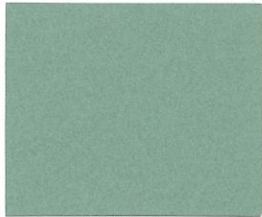
Bleached Grey  
910



Cherry Berry  
917



Ocean Grey  
913



Green Satin  
302



Rocky Grey  
909



Executive Grey  
918



Dry Clay  
911



Light Grey  
901



Neon Green  
904



Brown  
701



Silver  
300



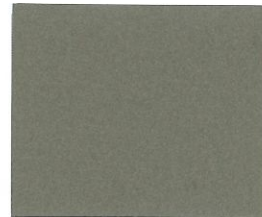
Ashwood Brown  
920



Storm Blue  
914



Light Grey  
501



Brown Velvet  
907



Dark Grey  
905



Muddy Brown  
921



Midnight Blue  
902



Spruce  
304



Grey Black  
906

## Hydro Metallic



Sealer / Primer	Metal : Aquatec Red Oxide Primer	1 Coat
	Wood : Hydro Primer	
	Masonry : 5100 Wall Sealer / 5200 Interior Sealer	
Undercoat	Aluminium : Etching Primer 120	1 Coat
	Metal : Hydro Primer	1 Coat
Top Coat	Hydro Metallic	2 - 3 Coats

Drying time	Touch Dry : 1 - 2 hours
	Hard Dry : 2 - 4 hours
	Recoating Interval : 2 - 4 hours
Dilution	Maximum 5% dilute with water

## Metallic Paint



Sealer / Primer	Metal : Aquatec Red Oxide Primer / 8048 Zinc Phosphate Primer	1 Coat
	Wood : Hydro Primer	
	Masonry : Hydro Primer / 5200 Interior Sealer / 5400 Wall Sealer	
Top Coat	Metallic Paint	2 Coats

Drying time	Touch Dry : 15 Minutes
	Hard Dry : 45 Minutes
	Recoating Interval : Min 2 Hours
Dilution	Maximum 5% dilute with Acrylic 3000 Thinner

## Micaceous Iron Oxide (MIO)



Top Coat	Metal : Micaceous Iron Oxide (MIO)	2 Coats
----------	------------------------------------	---------

Drying time	Touch Dry : 1 Hours
	Hard Dry : 16 Hours
	Recoating Interval : Min 16 Hours
Dilution	Maximum 5% dilute with Nippon General Purpose Thinner



Advisable to wear mask during painting.



**NEW**

## Gold Paint

Super lasting gold finish | Weather Resistant | Excellent for DIY



**THE COATINGS EXPERT®**

**NIPPON PAINT (M) SDN. BHD.** (7516-H)

Lot I-17, Taman Perindustrian Subang Utama, Jalan SU 4, 40300 Shah Alam, Selangor Darul Ehsan, Malaysia.

☎ 1-800-88-2663 ✉ customercare@nipponpaint.com.my

🏠 www.nipponpaint.com.my 📘 facebook.com/nipponpaintmalaysia

Updated on Dec 2021